

# LAICA®

**LAICA S.p.A.**

Viale del Lavoro, 10  
36048 Barbarano Mossano (VI) - Italy  
Phone +39 0444.795314  
info@laica.com



[www.laica.com](http://www.laica.com)

IM-IWH-STD  
ISTI00

# LAICA



Stop 99,999% of germs\*  
for safe drinking water

## VOLCANO 03

**EN Safe water instant heater**  
Instructions and guarantee



\* Tests carried out by Qualified Laboratories on Escherichia Coli ATCC 25922 (WDCM 00013), Legionella pneumophila ATCC 33152 (WDCM 00107), Pseudomonas aeruginosa ATCC 9027 (WDCM 00026) and Staphylococcus aureus ATCC 25923 (WDCM 00034).

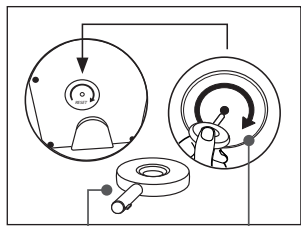
**LAICA**  
IM-IWH-STD  
ISTI00



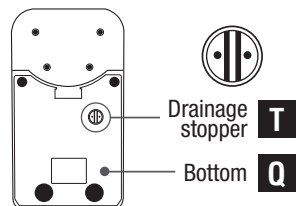
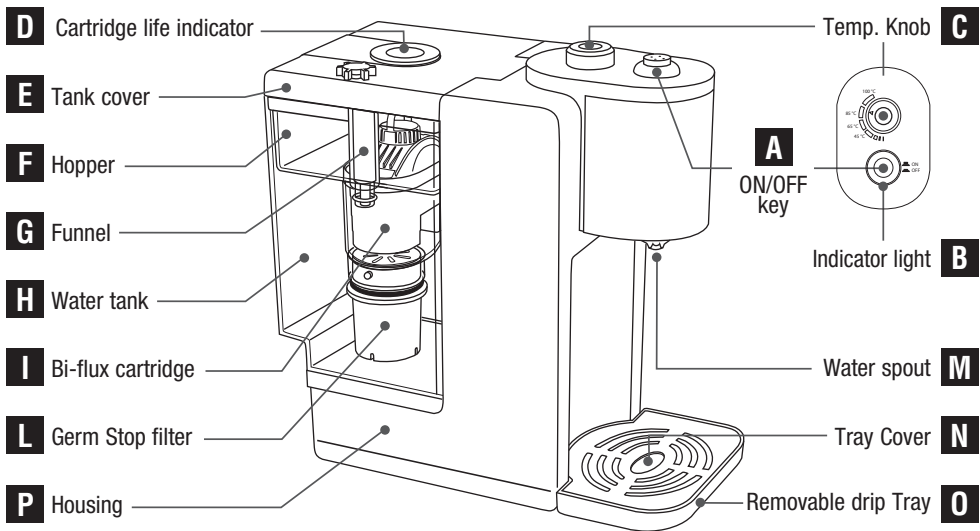
# LAICA

GERM STOP

## COMPONENTS



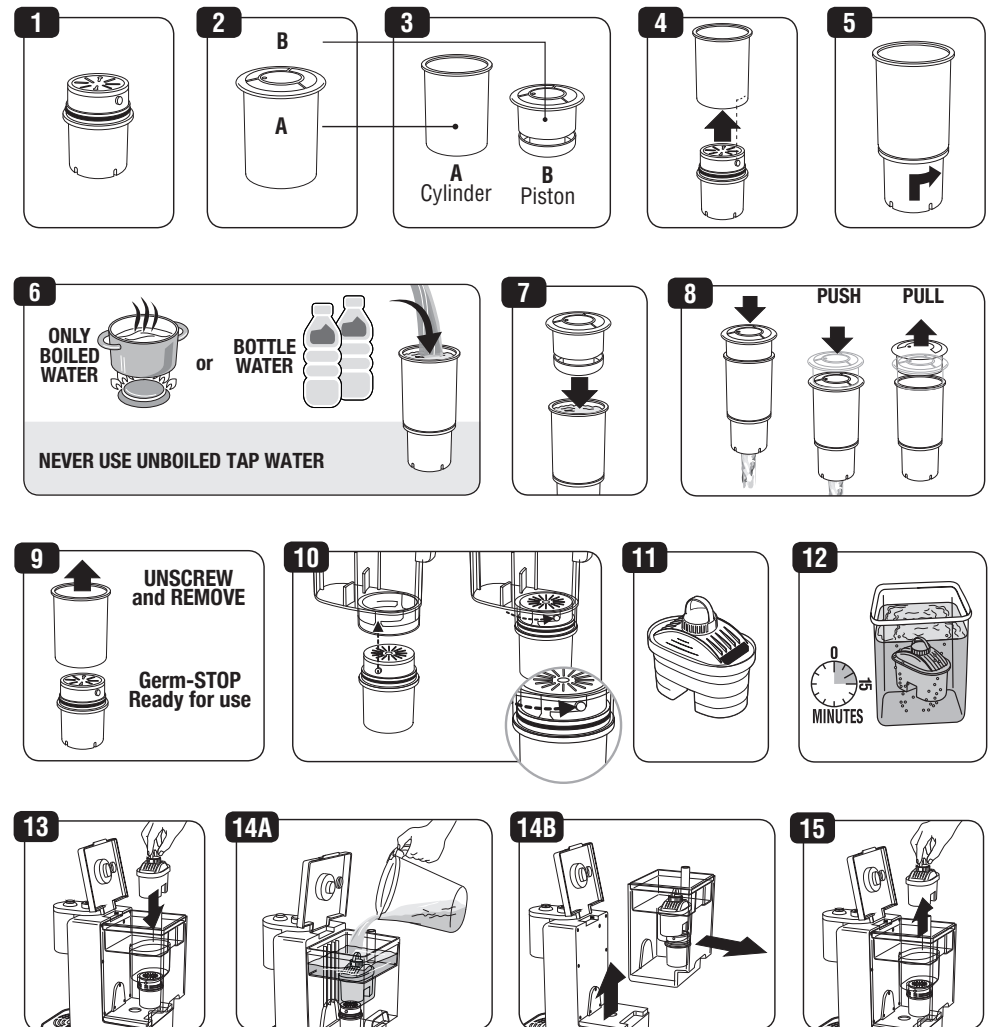
**S** Reset key **R** Reset button



# LAICA

GERM STOP

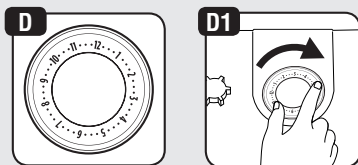
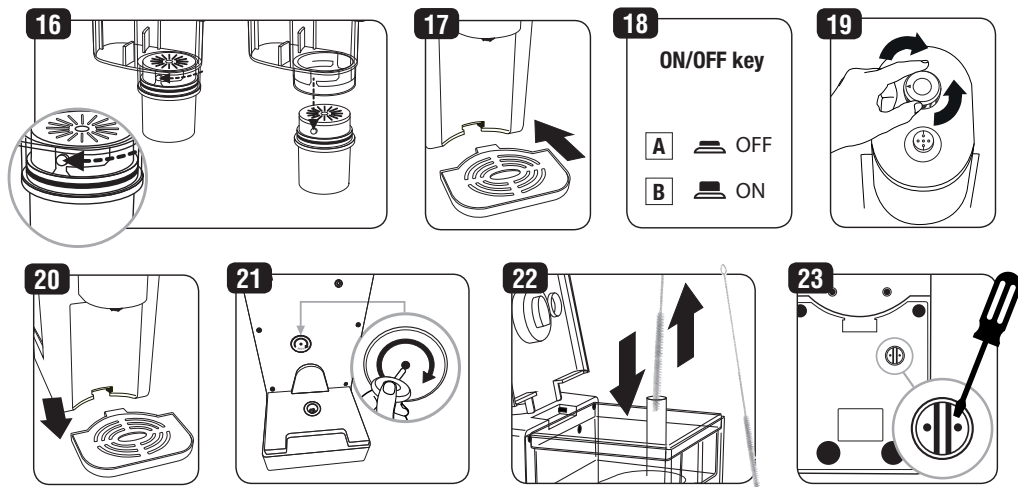
## Preparation of Germ-STOP filter and Bi-flux cartridge



# LAICA

**GERM STOP**

Stop 99,999% of germs\*  
for safe drinking water



**U**

Time setting range for cartridge life indicator

month	Jan	Feb	Mar	Apr	May	Jun	Jul	Aug	Sept	Oct	Nov	Dec
	1 • • •	2 • • •	3 • • •	4 • • •	5 • • •	6 • • •	7 • • •	8 • • •	9 • • •	10 • • •	11 • • •	12 • • •
week	1° 2° 3° 4°	1° 2° 3° 4°	1° 2° 3° 4°	1° 2° 3° 4°	1° 2° 3° 4°	1° 2° 3° 4°	1° 2° 3° 4°	1° 2° 3° 4°	1° 2° 3° 4°	1° 2° 3° 4°	1° 2° 3° 4°	1° 2° 3° 4°

# LAICA

**GERM STOP**

Stop 99,999% of germs\*  
for safe drinking water

## Safe water instant heater

# 2

YEARS GUARANTEE  
ANOS DE GARANTIA  
ANS DE GARANTIE



Date  
Fecha  
Date

\_\_\_ / \_\_\_ / \_\_\_

Retailer's stamp  
Sello del revendedor  
Cachet du revendeur

**LAICA S.p.A.**

Viale del Lavoro, 10 - 36048 Barbarano Mossano (VI) - Italy - Phone +39 0444.795314  
info@laica.com - [www.laica.com](http://www.laica.com)



Dear customer, Laica wishes to thank you for choosing this product, designed for reliability and quality to provide complete satisfaction.

## IMPORTANT READ CAREFULLY BEFORE USING KEEP FOR FUTURE REFERENCE

The instruction manual must be considered an integral part of the product and must be kept for its entire life. If the appliance is transferred to another owner, its documentation must also be transferred in its entirety. To ensure the safe and correct use of the product, the user must carefully read the instructions and warnings contained in the manual insofar as they provide important information regarding safety, user and maintenance instructions. If you lose the instruction manual or require further information or explanations, please contact Laica at the following address:

Laica S.p.A. Viale del Lavoro, 10  
36021 Barbarano Mossano (VI) - Italy  
Phone +39 0444 795314  
www.laica.com - info@laica.com

## Technical specification

Voltage: AC 220-240V, 50/60Hz  
Power absorption: 2200-2600W  
Tank capacity: 3L  
Hopper capacity: 0.8L

The system is equipped with:

1. **Germ-STOP filter (fig.1)**, which is effective in the mechanical block of bacteria, that may be present in the municipal potable water for accidental situations.
2. **Germ-STOP Activation pump (fig.2)**, a manual piston-type module made of two components: a cylinder (fig. 3A) and a piston (fig. 3B) for the preparation of the Germ-STOP filter.
3. **Bi-flux cartridge (fig 11)**, effective in the reduction of chlorine and disinfection by-products, in heavy-metals and some chemicals including some pesticides and herbicides.

**CAUTION:** use these cartridges/filters to treat municipal potable water (check with the competent authority in your area).

## GENERAL WARNINGS ON SAFETY OF YOUR LAICA ULTRA-FILTRATION SYSTEM

- Prior to use, ensure the product is intact and that there is no visible damage. If in doubt, refrain from using the device and contact your retailer.

- Keep the plastic bag out of reach of children: danger of suffocation.
- Follow the instructions of the present manual. Failure to do so may affect the product safety or damage the product itself.
- This device must be used only for its intended purpose which is DEVICE TO TREAT POTABLE WATER and according to the instructions for use. All other types of use shall be considered inappropriate and therefore hazardous.
- Do not use this product for the production of potable water.
- In case of Authorities warning to boil the tap water for safety against a temporary contamination risk, also the water filtered with this filtration system must be boiled.
- When Authorities declare that the tap water is potable and safe again, the system must be cleaned as per "ULTRA FILTRATION SYSTEM PREPARATION" paragraph and both Biflux cartridge and Germ-STOP filter must be replaced.
- People affected by specific diseases, allergies or following controlled diets should refer to a doctor before using the ultra-filtration system.
- **NEVER** use the ultra-filtration system with previously treated water.
- **In the case of emergency situations reported by the competent authorities, contact the competent authority in your area for further information.**
- **NEVER** tamper with or break the cartridge/filter for any reason.
- Before connecting the appliance, make sure the mains voltage corresponds to the voltage on the plate indicated on the appliance. The use of an extension cable is not recommended.
- The manufacturer shall not be deemed liable for any damage caused by inappropriate or incorrect use.
- This device may be used by anyone aged 14 years and over.
- Children and individuals with physical, sensory or mental disabilities or unskilled people, may use and perform maintenance on the product only under adult supervision. Children must not play with the device.
- Product cleaning and maintenance must only be performed by adults.
- **NEVER** leave the appliance operating unsupervised. Once finished using, turn it off and unplug it from the mains.

- In the event of a fault and/or malfunction, turn off the device without tampering with it. Contact your retailer for repairs. Information on technical support can be requested by contacting info@laica.com.
- **NEVER** connect or disconnect the appliance and **NEVER** operate the control panel with wet or damp hands.
- Do NOT pull on the power cord or the device itself to unplug it.
- Handle the product with care, protect it against accidental impact, extreme temperature fluctuations, dust, direct sunlight and sources of heat.
- Unplug it immediately after use, always before cleaning and connecting or disconnecting attachments or changing accessories and make sure it is cooled down thoroughly.
- If an electrical appliance falls into water, do not attempt to extract it, but immediately remove the plug from the power socket.
- Attention! Do NOT tamper with the power cord for any reason. If damaged, contact your retailer.
- Extend the cable fully, keeping it away from heat sources, do not let it hang over the edge of the table or countertop and take care that it does not touch any hot surface during use.
- **NEVER** use power adaptors that differ from those indicated on the label placed on the product.
- Place the instant heater on a flat, solid, flame retardant surface that is heat proof and away from the edge of the counter top.
- Keep the appliance away from the stove, electric hot plate, oven or flammable materials.
- **NEVER** cover the appliance: risk of fire.
- Do not insert any objects into openings.
- Do not use the appliance if the lid is damaged.
- During use, the appliance gets very hot with extremely high water temperatures: do not touch the hot surface as the water spout, **NEVER** remove the lid during boiling cycle. Do not move the safe water instant heater during operation. Let it cool down before cleaning it. Always take care when pouring boiling water. Pour carefully and slowly.
- **NEVER** test the water temperature on hands or any part of body: risk of scald.
- **NEVER** operate the appliance without water inside or with the water level below the MIN level to avoid damaging the heating elements.
- **NEVER** filter hot water.
- Only filter and heat cold running water from the household mains.

- Do not lubricate any parts or carry out any maintenance or repair work other than that shown in this manual.
- **NEVER** put the appliance into a working disinfection cabinet.
- **NEVER** freeze the appliance.
- Do not use it outdoors.
- When using for the first time, there may be a slight smell and some vapour: this is normal and harmless and is caused by the protective substance applied to the heating elements.
- This device is not intended for professional use, but rather only for domestic use

## IMPORTANT:

- 1) **Always remove the Germ-STOP filter and Bi-flux cartridge before washing the hopper. N.B. The filter may be difficult to remove: this is normal because, due to safety issues, the filter adheres to the hopper in order to prevent unwanted leakages. Do not wash the cartridge and filter with soap or detergents.**
- 2) **Never wash Germ Stop filter with tap water and never filter directly tap water with Germ-STOP filter. Always use water already filtered by Bi-flux cartridge.**

## IMPORTANT NOTES FOR PRODUCT USE

This system is for use on water supplies that have been treated to public water system standards or that otherwise are determined to be microbiologically safe as demonstrated by routine testing. This system has been tested to demonstrate protection against intermittent accidental microbiological contamination of otherwise safe drinking water.

- The Laica filtration system maintains the pH value within the range indicated by European Directive 98/83/EC concerning the quality of water meant for human consumption.
- The activated carbon contained in the Biflux filter may release a certain amount of fine powder (which is in no way harmful).
- Silver is used in the Bi-flux cartridge to grant its bacteriostatic action. Any release of silver ions falls under the guidelines from the World Health Organization (WHO).
- Germ-STOP filter flow rate and life time may vary depending on the quantity, quality and temperature of the filtered water.





## DECLARATION OF CONFORMITY:

Filtration systems produced by Laica are compliant with the following standards:

- European Directive EMC 2014/30/Eu concerning Electromagnetic Compatibility.
- European Directive LVD 2014/35/Eu concerning Low Voltage.
- Ministry Decree no. 174 dated 6/04/2004 regarding materials and objects that may be used in collection, treatment, supply and distribution systems for water intended for human consumption.
- Legislative Decree no. 31 dated February 2, 2001, Italian transposition of the Directive 98/83/EC related to water meant for human consumption.
- Regulation 1935/2004/EC regarding materials in contact with food.
- Regulation (EU) 10/2011 regarding plastic materials and objects intended to come in contact with food.

## ULTRA FILTRATION SYSTEM PREPARATION

Before using the safe water instant heater for the first time:

1. Wash the water tank, the hopper with its funnel, the tray and its cover with previously boiled potable water and washing-up liquid. Make sure all the detergent is rinsed off after cleaning. Dry all these parts with a clean cloth.
2. Use a clean dish or surface to place the hopper. Never work in dirty conditions.
3. Put the water tank on its base of the safe water instant heater.
4. Insert the removable drip tray (**fig.0**) into its housing (**fig.17**).
5. Open the tank cover, fill the tank to the MAX level with cold potable water previously boiled. Close the tank cover.
6. Ensure the ON/OFF key is to the OFF position (button should be pressed down, as per **fig. 18A**) before plugging the safe water instant heater into a mains socket, then plug it in.
7. Place your cup on the removable drip tray, make sure it aligns with the spout.
8. Using the temperature knob (**fig. C**), set the temperature to the minimum value (**fig.19**).
9. Press the ON/OFF key to the ON position (button should be up, **fig.18B**). The indicator light around the button will illuminate red. Water will start to flow from the water spout when the indicator light turns green. **Do not leave unattended during the water flow process.**
10. When desired switch off the safe water instant heater by pressing the ON/OFF key to the OFF position to stop the flow of water. The indicator

light will go off. **Allow a couple of seconds for the flow of water to stop completely.**

11. Keep on filling other cups until the tank is completely empty. Repeat whole rinsing cycle for other 3 times.
12. After cleaning the appliance, unplug the device, remove the drip tray, place the appliance on a sink, then open the drainage stopper (**fig.T**) with a screw driver (**fig. 23**) and let the wastewater to come out.
13. Then reinsert the drainage stopper on its housing, close it and take care to dry all the parts with a clean cloth.
14. Place the device on a flat, solid, flame retardant surface that is heat proof and away from the edge of the counter top.

The hopper has got a funnel (**fig. G**) for air outlet. Take care of keeping always the funnel closed (by closing the device cover).

The hopper of the ultra-filtration system is made to house Laica Biflux cartridge and Laica Germ-STOP filter only.

## PREPARATION OF Germ-STOP FILTER

- 1) Before preparing the filter, wash your hands thoroughly with water and soap.
- 2) Remove the filter (**fig.1**) from its bag.
- 3) Use a clean dish or surface to place the filter. Never work in dirty conditions.
- 4) Remove the Activation pump (**fig.2**) from its bag and never place it on dirty surfaces during operation.
- 5) Separate piston from cylinder by pulling it upwards.
- 6) Hook the Germ-STOP filter to the cylinder by screwing it (**fig. 4 and 5**).
- 7) Fill the cylinder, once hooked to the filter, with cold **potable previously boiled** water or bottle water (**fig. 6**). **NEVER USE UNBOILED TAP WATER.**
- 8) Take the piston (**fig. 3B**) and push it downwards inside the cylinder strongly enough to make the water go out from the Germ-STOP filter and then pull it upwards (**fig 7 and 8**).
- 9) Repeat points 7 and 8 for 3 times. Important: make sure to never push the piston downwards inside the cylinder if it is still empty and not filled with cold tap boiled water, in order to avoid any air to enter.
- 10) Unscrew the Germ-STOP filter from the cylinder of the activation pump (**fig. 9**).
- 11) Assemble the Germ-STOP filter to the bottom of the hopper by screwing it (**fig. 10**).
- 12) Place the hopper into the water tank.

The Germ-STOP system is now ready to be completed with the Bi-flux system.

## PREPARATION OF BI-FLUX CARTRIDGE

- 1) Before proceeding with the following operations, wash hands thoroughly with water and soap.
- 2) Remove the cartridge (**fig. 11**) from its bag.
- 3) Use a clean dish or surface to place the cartridge. Never work in dirty conditions.
- 4) Soak the cartridge in a container full of cold tap previously boiled water, for approximately 15 minutes (**fig. 12**). Shake the cartridge to release the air it contains.
- 5) Insert the cartridge into the hopper pressing slightly to ensure correct insertion (**fig. 13**).

The complete system is now ready for use.

## ACTIVATION OF THE CARTRIDGE LIFE INDICATOR

### D Cartridge life indicator for Bi-flux lifetime on safe water instant heater

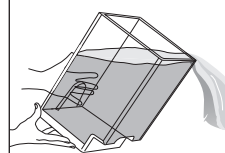
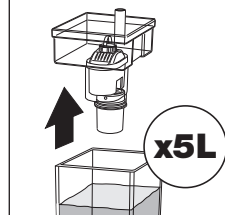
Turn the upper lens of the indicator clockwise as indicated in **fig.D1**, to set the start month and week for the cartridge (**fig. U**). The month and week of reference must be aligned with the red sign printed on the upper lens of the indicator.

## USING THE SAFE WATER INSTANT HEATER



### ATTENTION! MANDATORY: At FIRST USE:

- 1) Fill the hopper with cold mains water up to the top level of the same and allow filtering without closing the tank cover.
- 2) Remove the water tank from its base, remove the hopper and discard the filtered water or use it to water your plants.
- 3) Repeat this operation until 5L have been filtered and discarded.



**REPEAT THESE OPERATIONS ALSO IN CASE YOU DON'T USE THE SYSTEM FOR 15 DAYS AND EVERY TIME YOU REPLACE THE CARTRIDGE/FILTER**

- 1) Put the water tank on its base.
- 2) Insert the removable drip tray (**fig.0**) into its housing (**fig.17**).
- 3) Open the tank cover, fill the water tank with potable cold tap water by using a jug (not supplied) to the MAX marker (**fig.14A**). Close the tank cover. Alternatively, you can detach the water tank from the base (**fig.14B**) and fill the hopper with potable cold tap water using the tap. Ensure the water tank is completely dry before reattaching it to the safe water instant heater and then close the tank cover.

**The water level must be less than Max level and more than MIN level.**

- 4) Ensure the ON/OFF key is to the OFF position (**fig. 18A**) before plugging the safe water instant heater into a mains socket and then plug it in.
- 5) Place your cup on the removable water tray, make sure it aligns with the spout. If you are using a cup, mug or container that is too large to fit underneath the water spout, the drip tray can be removed (**fig.20**) to accommodate.
- 6) Using the temperature knob (**fig.C**), select your desired water temperature (**fig.19**).
- 7) Press the ON/OFF key to the ON position (**fig.18B**). The indicator light around the button will illuminate red. Heated water will start to flow from the water spout when the indicator light turns green. **Do not leave unattended during the water flow process.**
- 8) When desired switch off the safe water instant heater by pressing the ON/OFF to the OFF position to stop the flow of water. The indicator light will go off. **Allow a couple of seconds for the flow of water to stop completely.**
- 9) Repeat the above steps for as many cups as you require.



- Make sure your cup or container is positioned directly underneath the water spout.
- Never operate without a cup or container under the water spout.
- Do not operate with the water level below the MIN marker (0.5L).
- The indicator light will illuminate red if there is not enough water in the water tank. Should this happen, ensure the appliance is switched off and unplugged before refilling the water tank above the MIN marker, but not exceeding the MAX marker.
- Excess use or using without water will activate the boiler's thermal safety device and the appliance will stop working. Should this occur, unplug and allow to cool before detaching the water tank. Use the reset key (fig.5) to press the reset button on the rear of the appliance (fig.21), then put the water tank on its base and fill with water.

10) When the tray is full, remove it (fig.20), empty the tray and insert it into the original place.

## CAUTION:

- In the case of non-use of the ultra-filtration system for 12 hours, discard the water that remains inside it. Then fill the hopper and let it filter. After that, press the ON/OFF key to the ON position and discard the first glass of water. The system is ready for use again.
- Keep the product away from heat sources and direct sunlight.
- Only use cold water (+4°C; +30°C).
- Only filter water, do not filter any other type of liquid.

## FILTER AND CARTRIDGE LIFE-TIME

- **Bi-flux cartridge:** 150 liters or 1 month (what comes first).
- **Germ-STOP filter:** Germ-STOP blocks bacteria and suspended particles (water turbidity). The filter stops working when its hollow fibers pores are completely blocked. Tests carried out with challenge water with a 30 FAU turbidity indicate a life-time of 1000 Liters.

## FILTER AND CARTRIDGE REPLACEMENT

- **Bi-flux cartridge:** For replacement of the cartridge remove it from the hopper by pulling it upwards, as shown in fig. 15, and repeat the operations as indicated in the section: **"ULTRA FILTRATION SYSTEM PREPARATION - PREPARATION OF BI-FLUX CARTRIDGE"**
- **Germ-STOP filter:** For replacement of the filter remove it from the hopper by unscrewing it as shown in fig. 16 and repeat the operations as indicated in the section: **"ULTRA FILTRATION SYSTEM PREPARATION - PREPARATION OF Germ-STOP FILTER"**

## CARE AND MAINTENANCE

- Wash your hands thoroughly before cleaning the appliance.
  - Let the appliance cool down completely before cleaning it.
  - Wipe the exterior of the safe water instant heater with a slightly damp cloth.
  - Never use chemicals or abrasives.
  - Wash the removable drip tray 2-3 times a week with hot water previously boiled and washing up liquid, rinse thoroughly and dry with a soft cloth. Place it on a dry cloth so that it dries completely and then insert it in its housing.
  - Remove the funnel from the hopper and clean it internally with a cleaning brush at least 2-3 times a week (fig. 22).
  - Wash the tank and the hopper by hand with warm water previously boiled and washing-up liquid at least 2-3 times a week. Do not use other chemicals or abrasives.
- Always remove the Germ-STOP filter and the Bi-flux cartridge before washing the hopper.
- N.B. The filter may be difficult to remove: this is normal because, due to safety issues, the filter adheres to the hopper in order to prevent unwanted leakages.**
- Never wash the Germ Stop filter with tap water.**  
Do not wash the Bi-flux cartridge and the Germ Stop filter with soap or detergents.
- Store the appliance in a cool, dry area.

## DESCALING

**Remove the limescale from the device at least every 2 weeks.**

**Remove the bi-flux cartridge and Germ-STOP filter before following operations:**

- 1) Add 30 ml of citric acid-based descaling product into the empty water tank and fill the water tank with cold tap water previously boiled just below the MAX marker and stir the mixture well. **WARNING! Never fill with hot or boiling water for the descaling process as this can damage the water tank.**
- 2) Place an empty cup or container onto the removable drip tray and plug in the appliance. Turn on the safe water instant heater pressing ON/OFF key to the 'ON' position to begin a cycle. Switch off the device by pressing ON/OFF key when cup or container is full. Discard the mixture and repeat until the water tank is empty.
- 3) Fill the water tank with fresh, clean tap water previously boiled till MAX level and repeat the cycle 2 or 3 times until the water tank is empty.

## REPLACEMENT OF DAMAGED PARTS

### Cartridge life indicator/Germ-STOP Activation Pump

In case of breaking or damage, contact your retailer. Then dispose of the damaged parts as per the paragraph **"DISPOSAL PROCEDURE"**.

## TROUBLE SHOOTING FOR ULTRA FILTRATION SYSTEM

PROBLEM	POTENTIAL CAUSE	SOLUTION
The water flow slows down until stopping	Biflux cartridge has not been properly activated.	Repeat the procedure described in the section "PREPARATION OF BI-FLUX CARTRIDGE".
	Air bubbles may build up inside the Biflux cartridge thus hindering the normal water flow.	Remove the cartridge, immerse it in cold, clean potable water previously boiled letting the air bubbles escape, allow it to drip and then insert it again into the hopper.

The water flow slows down until stopping	Germ-STOP filter life time has elapsed.	Replace Germ-STOP filter with a new one.
	Germ-STOP filter is new but it has not been activated properly.	Repeat the procedure described in the section "PREPARATION OF Germ-STOP FILTER".
Undesirable smells or tastes are present in the system	The system cleaning and maintenance have not been done properly.	Repeat the procedure described in the section "CARE AND MAINTENANCE".
	Germ-STOP filter life time has elapsed.	Replace the Germ-STOP filter with a new one.

## TROUBLE SHOOTING FOR SAFE WATER INSTANT HEATER SYSTEM

PROBLEM	SOLUTION
The ON/OFF key will not stay in position.	Check the appliance is plugged in.
	The safe water instant heater is still too hot. Wait several minutes for the appliance to cool down before switching back on.
The safe water instant heater does not dispense a full cup of water.	Descal the appliance regularly to ensure limescale build-up around the water spout is removed. See the "Descaling" paragraph.
	Make sure the water level in the water tank is between the MIN and MAX levels indicated on the appliance.
The safe water instant heater produces excess steam but does not dispense boiling water.	Make sure the water level in the water tank is between the MIN and MAX levels indicated on the appliance and restart a cycle.
	Descal the safe water instant heater. See the "Descaling" paragraph.
The safe water instant heater switches off while in use.	The safe water instant heater may have overheated (see the "Using the safe water instant heater" paragraph). Allow to cool and reset the reset switch located on the rear of the appliance with the reset key.



## DISPOSAL PROCEDURE



The symbol on the bottom of the device indicates the separated collection of electric and electronic equipment (**Dir. 2012/19/Eu-WEEE**).

At the end of life of the device, do not dispose it as mixed solid municipal waste, but dispose it referring to a specific collection centre located in your area or returning it to the distributor, when buying a new device of the same type to be used with the same functions. If the appliance to be disposed of is less than 25 cm, it can be returned to a retail location that is over 400 m<sup>2</sup> without having to purchase a new, similar device.

This procedure of separated collection of electric and electronic devices is carried out forecasting a European environmental policy aiming at safeguarding, protecting and improving environment quality, as well as avoiding potential effects on human health due to the presence of hazardous substances in such equipment or to an improper use of the same or of parts of the same.

Caution! The wrong disposal of electric and electronic equipment may involve sanctions

## Instructions for the disposal of cartridge and filter:

Dispose them as solid municipal waste.



This product is intended for home use.

The conformity, proven by the CE marking on the appliance, is related to the directive 2014/30/Eu relating to electromagnetic compatibility and to the directive 2014/35/Eu relating to electrical equipment intended to be used within certain voltage limits. This product is an electronic instrument that has been checked to ensure that, in the current state of technical knowledge, it will not interfere with other equipment located in the vicinity (electromagnetic compatibility) and that it is safe if used according to the instructions described in the user instructions. In case of abnormal behaviour of the appliance, refrain from use and if necessary contact the manufacturer directly.

## WARRANTY

This equipment is covered by a 2 years warranty starting from the purchase date, which has to be proven by means of the stamp or signature of the dealer and by the fiscal payment receipt that shall be kept enclosed to this document. This warranty period complies with the laws in force and applies only in case the consumer is an individual. Laica products are designed for domestic use only; therefore, their use for commercial purposes is forbidden. The warranty covers only production defects and does not apply, if the damage is caused by accidental events, misuse, negligence or improper use of the product. Use the supplied accessories only; the use of other accessories invalidate the warranty cover. Do not open the equipment for any reason whatsoever; the opening or the tampering of the equipment, definitely invalidate the warranty. Warranty does not apply to parts subject to tear and wear along the use, as well as to batteries, when they are included. Warranty decays after 2 years from the purchase date. In this case, technical service interventions will be carried out against payment. Information on technical service interventions, under warranty terms or against payment, may be requested by writing at [info@laica.com](mailto:info@laica.com). Repair or replacement of products covered by the warranty terms are free of charge. In case of faults, refer to the dealer; DO NOT send anything directly to LAICA.

All interventions covered by warranty (including product replacement or the replacement of any of its parts) shall not be meant to extend the duration of the original warranty period of the replaced product.

The manufacturer cannot be made liable for any damages that may be caused, directly or indirectly, to people, things and pets resulting from the inobservance of the provisions contained in the suitable user manual, especially with reference to the instructions related to installation, use and maintenance of the equipment. Being constantly involved in improving its own products, Laica reserves the right to modify its product, totally or partially, with reference to any production need, without that this involves any responsibility whatsoever by Laica or its dealers.

## 1) Guidelines for Drinking-water Quality - 4th ed.

ISBN 978 92 4 154815 1 (NLM classification: WA 675), World Health Organization, WHO Library Cataloguing-in-Publication Data.

## 2) Nutrients in Drinking-water

ISBN 92 4 159398 9 (NLM classification: WA 687), Water, Sanitation and Health, Protection and the Human Environment, World Health Organization, Geneva. World Health Organization, WHO Library Cataloguing-in-Publication Data.

## 3) Silver in Drinking-water

Background document for development of WHO Guidelines for Drinking-water Quality. World Health Organization, World Health Organization, Geneva, 1996.

## 4) pH in Drinking-water

Background document for development of WHO Guidelines for Drinking-water Quality. World Health Organization, World Health Organization, Geneva, 1996.

## 5) Calcium and Magnesium in Drinking-water

Public health significance. ISBN 978 92 4 156355 0 (NLM classification: QV 276) World Health Organization, WHO Library Cataloguing-in-Publication Data

## 6) Hardness in Drinking-water

Background document for development of WHO Guidelines for Drinking-water Quality. World Health Organization, World Health Organization, Geneva, 1996.

## 7) Jug water filter systems – Specification

British Standard, BS 8427 : 2004

## 8) AFNOR – Association Française de Normalisation

Norme Francaise NF P41 - 650

## LAICA S.p.A.

Viale del Lavoro, 10  
36048 Barbarano Mossano (VI) - Italy  
Tel. +39 0444.795314 - 795321  
Fax. +39 0444.795324  
[www.laica.com](http://www.laica.com)